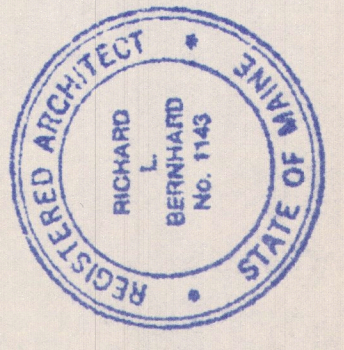


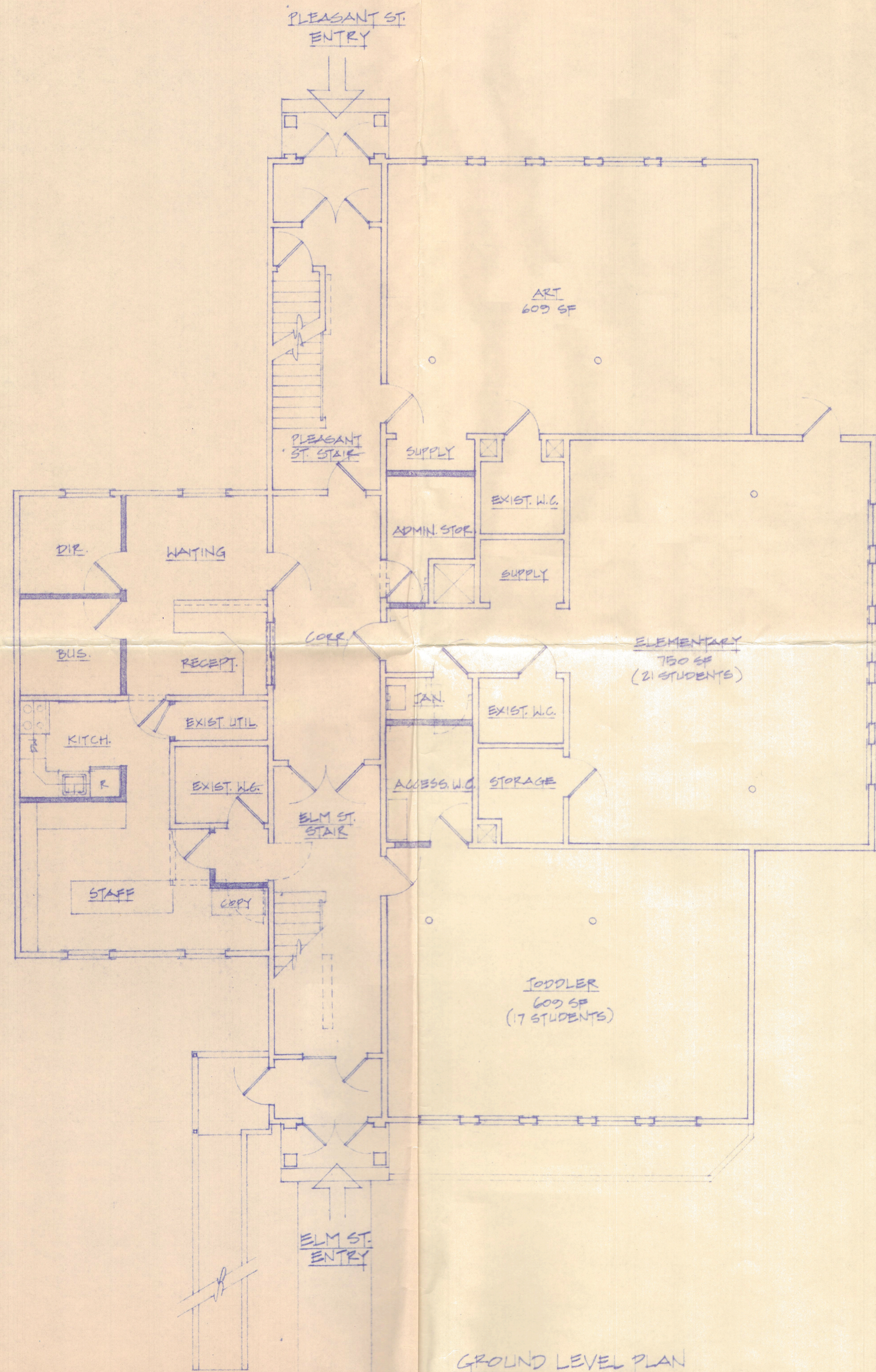
BERNHARD & PRIESTLEY
 ARCHITECTURE, LLC
 ROCKPORT, MAINE 207-236-7745



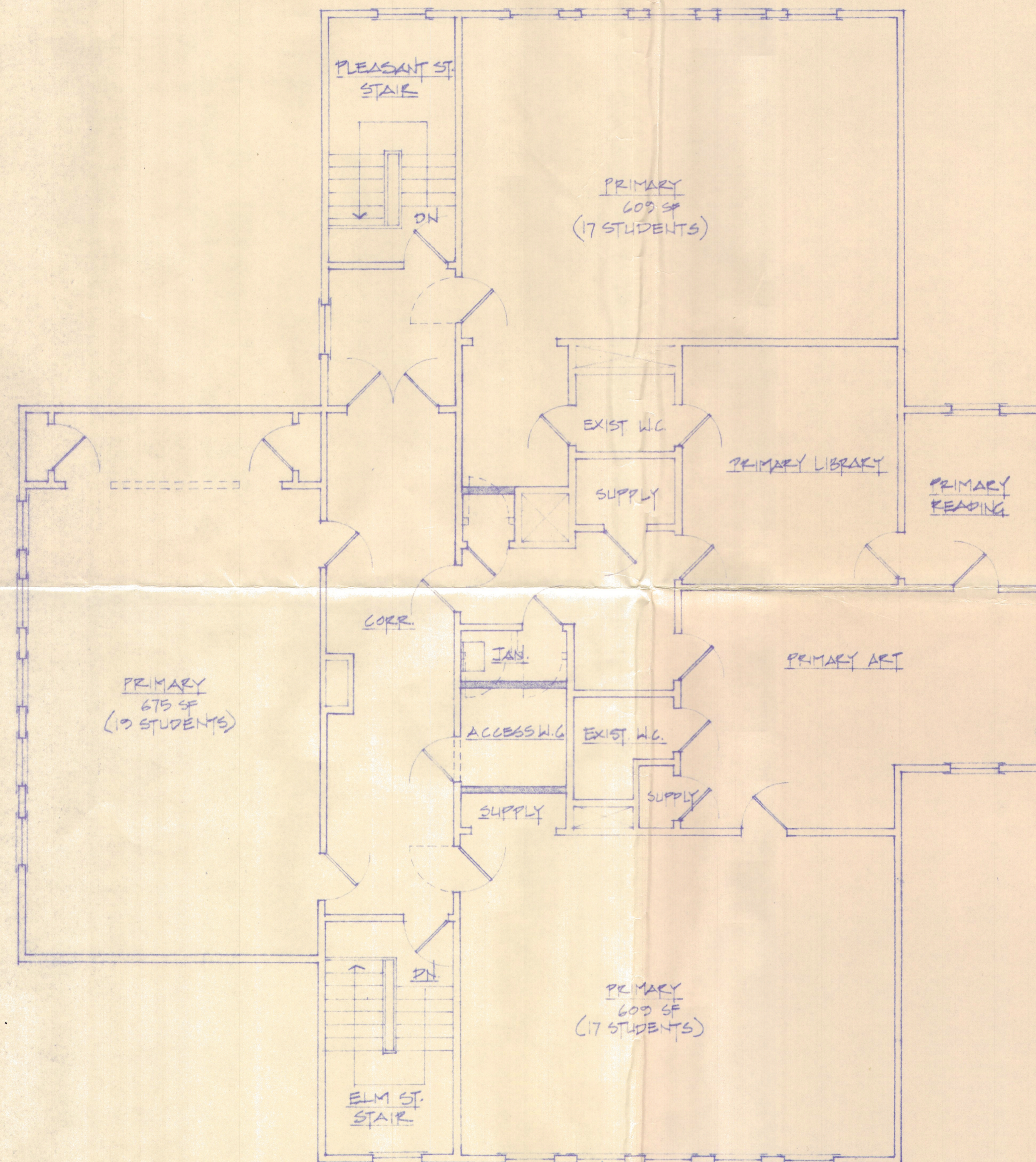
CHILDREN'S HOUSE
 MONTESSORI SCHOOL
 PROPOSED ALTERATIONS TO ELM STREET SCHOOL
 CAMDEN, MAINE

UPPER LEVEL PLAN
PROGRESS PRINT

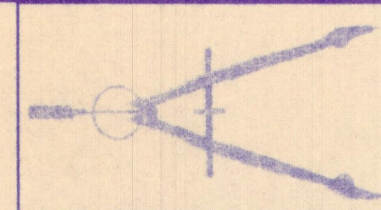
MAY 14 2004



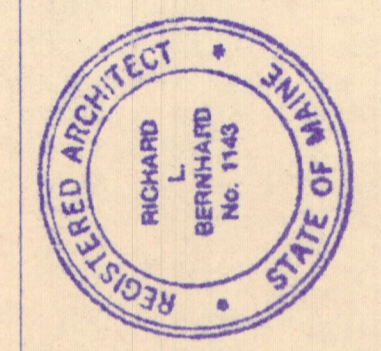
GROUND LEVEL PLAN



UPPER LEVEL PLAN



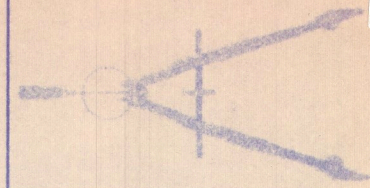
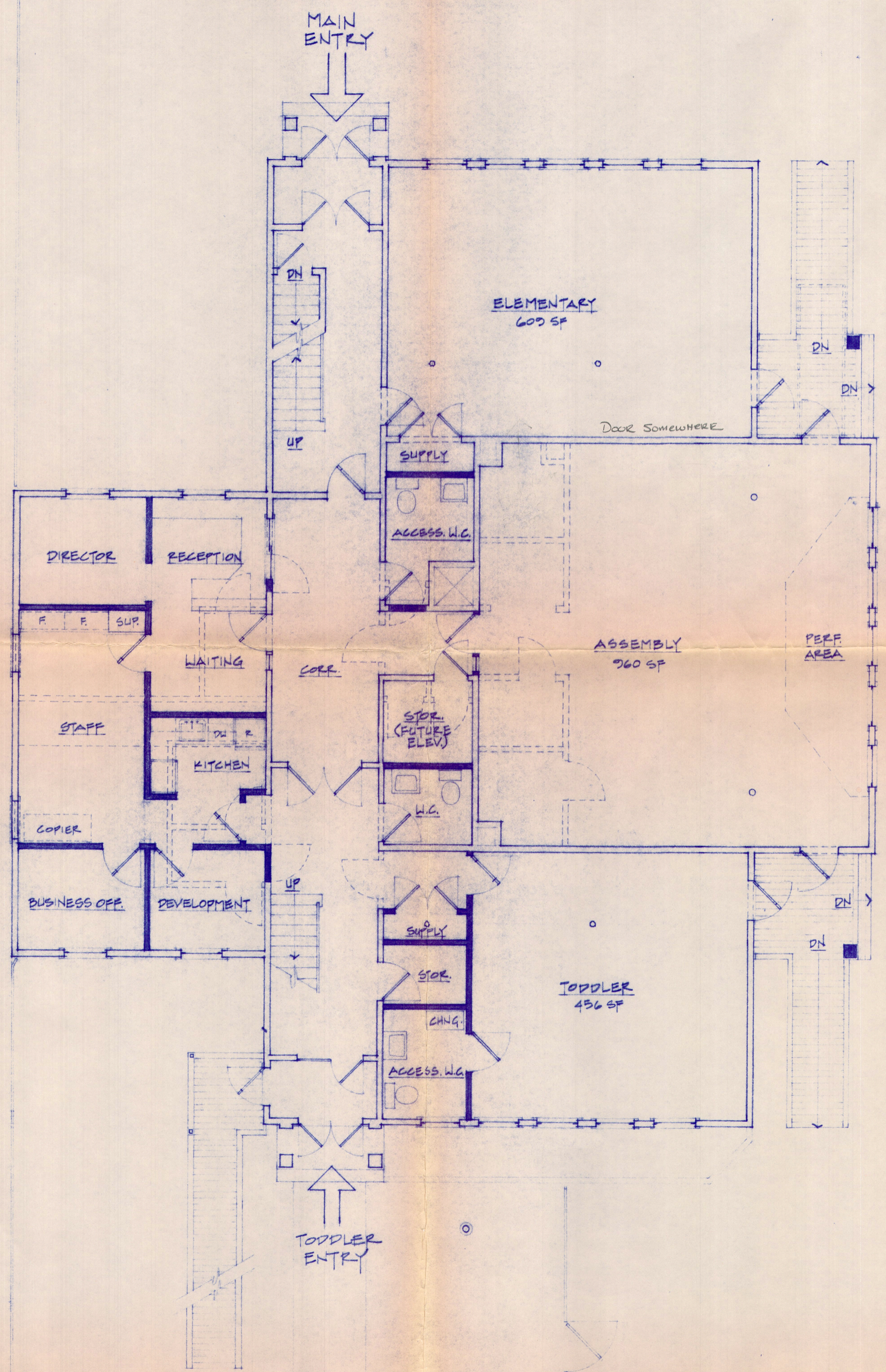
BERNHARD & PRIESTLEY
ARCHITECTURE, LLC
ROCKPORT, MAINE 207-236-7745



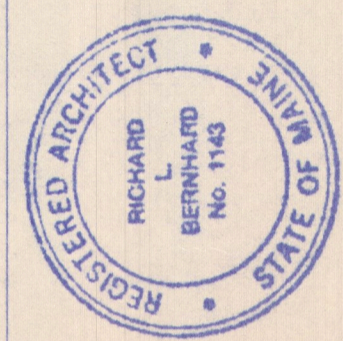
CHILDREN'S HOUSE
MONTESSORI SCHOOL
PROPOSED ALTERATIONS TO ELM STREET SCHOOL
CAMDEN, MAINE

FLOOR PLANS

DATE: 6.01.04
SCALE: 3/8"=1'-0"
ISSUE:



BERNHARD & PRIESTLEY
 ARCHITECTURE, LLC
 ROCKFORD, MAINE 207-236-7745



CHILDREN'S HOUSE
 MONTESSORI SCHOOL
 PROPOSED ALTERATIONS TO ELM STREET SCHOOL
 CAMDEN, MAINE

ENTRY LEVEL PLAN
PROGRESS PRINT

MAY 14 2004